
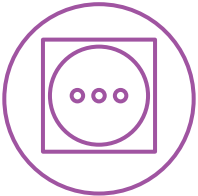


**HOW TO DRY AFTER WASHING** →


**MAKE SURE TO DRY COMPLETELY**



**USE HIGHEST HEAT SETTING**




**PLACE MASK IN DRYER**




**AIR DRY IN DIRECT SUNLIGHT**

OR

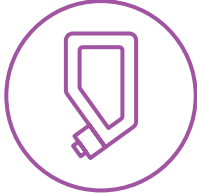


**HOW TO WASH AFTER WEARING** →


**PLACE MASK IN WASHING MACHINE**




**USE REGULAR DETERGENT**



**USE WARMEST WATER SETTING**

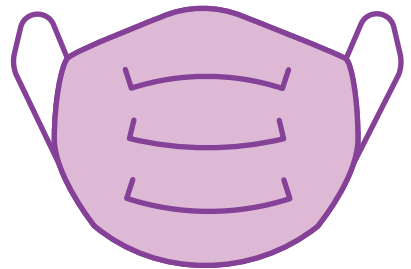


**WASH HANDS AFTER TOUCHING MASK**



Together, we can make sure this school year is off to a safe and healthy start!

→ REMEMBER TO  
**WEAR YOUR MASK**  
 OR **FACE COVERING**



**Face coverings are required in all district facilities.**

This guide is designed to provide you with directions for how to put on and take off your mask, how to wear it properly and keep it clean, and how to wash and dry it.

FOR MORE ON THE USE OF MASKS, VISIT [www.cdc.gov/coronavirus](http://www.cdc.gov/coronavirus)

# Here's how to put mask on ↓



**WASH HANDS**  
before touching mask



**USE EAR BANDS**  
to put mask on



**PLACE OVER**  
nose + mouth

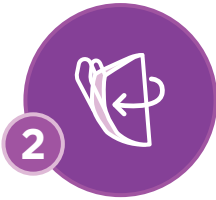


**CHECK FIT**  
around ears + under chin

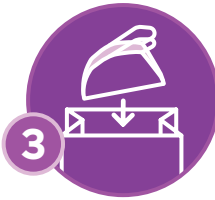
# Here's how to take mask off ↓



**USE EAR BANDS**  
to take mask off



**FOLD OUTSIDE**  
corners together



**SAFELY STORE**  
in clean container



**WASH HANDS**  
after touching mask

## HOW **NOT** TO WEAR →



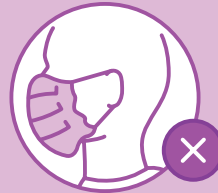
**DON'T WEAR**  
**BELOW NOSE**



**DON'T WEAR**  
**ON FOREHEAD**



**DON'T WEAR**  
**AROUND NECK**

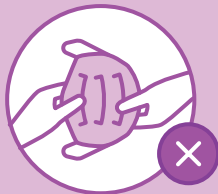


**DON'T WEAR**  
**LOOSE WITH GAPS**

## HOW TO **KEEP CLEAN** WHILE WEARING →



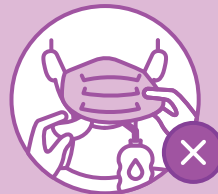
**DON'T TOUCH**  
**FRONT OF MASK**



**DON'T SHARE**  
**MASK WITH OTHERS**



**DON'T PLAY**  
**WITH MASK**



**DON'T EAT/DRINK**  
**WITH MASK ON**