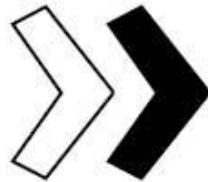


TRANSFORMING TOMORROW



Dubuque
COMMUNITY SCHOOLS



NOVEMBER 7, 2023
BOND REFERENDUM

AGENDA

»» HOW DID WE GET HERE?

»» WHAT'S INCLUDED?

»» WHY DOES IT MATTER?

»» WHAT'S THE OVERALL IMPACT?

»» WHAT'S NEXT?

HOW DID WE GET HERE?

MIDDLE SCHOOL STUDY
JUNE 2022 - FEBRUARY 2023

DISTRICT FACILITIES PLAN
ONGOING

**BOND
PLANNING**

VOTE
NOVEMBER 7,
2023

WHAT'S INCLUDED?



AIR CONDITIONING and HVAC

improvements to EXISTING SCHOOLS WITHOUT IT to ensure fully climate-controlled learning spaces.



NEW MIDDLE SCHOOL FACILITY

on the WASHINGTON MIDDLE SCHOOL SITE to replace the 100-year old Washington and Jefferson.



GYMNASIUM ADDITION

to EISENHOWER ELEMENTARY SCHOOL to alleviate scheduling and space constraints with lunch and PE.



BASEBALL and SOFTBALL FACILITY

with LIGHTS, RESTROOMS, and CONCESSIONS to provide safe and competitive facilities.



LAND ACQUISITION

for a POTENTIAL FUTURE ELEMENTARY SCHOOL to allow the district to address long-term needs and population shifts.



AIR CONDITIONING and HVAC improvements at

- BRYANT
- IRVING
- MARSHALL
- HOOVER
- LINCOLN
- ALTA VISTA

CURRENT STATE

ELEMENTARY SCHOOLS

- | | | |
|--------------|-----------|---------------|
| ✓ AUDUBON | ✗ HOOVER | ✗ MARSHALL |
| ✗ BRYANT | ✗ IRVING | ✓ PRESCOTT |
| ✓ CARVER | ✓ KENNEDY | ✓ SAGEVILLE |
| ✓ EISENHOWER | ✗ LINCOLN | ✓ TABLE MOUND |

MIDDLE SCHOOLS

- | | | |
|-------------|-------------|--------------|
| ✗ JEFFERSON | ✓ ROOSEVELT | ✗ WASHINGTON |
|-------------|-------------|--------------|

HIGH SCHOOLS

- | | |
|-------------|----------|
| ✓ HEMPSTEAD | ✓ SENIOR |
|-------------|----------|

ALTERNATIVE LEARNING

- | |
|---------------------|
| ✗ ALTA VISTA CAMPUS |
|---------------------|



WHY DOES IT MATTER?



THIS IS A TEMPERATURE READING FROM ONE OF OUR SCHOOLS THIS AUGUST



97% of houses in Iowa had air conditioning as of 2020.

6

HOURS

of instruction
were lost in the
FIRST 3 DAYS
of this school
year.

42

SCHOOL DAYS

were over
80 DEGREES
in the past two
school years.





IMPACT

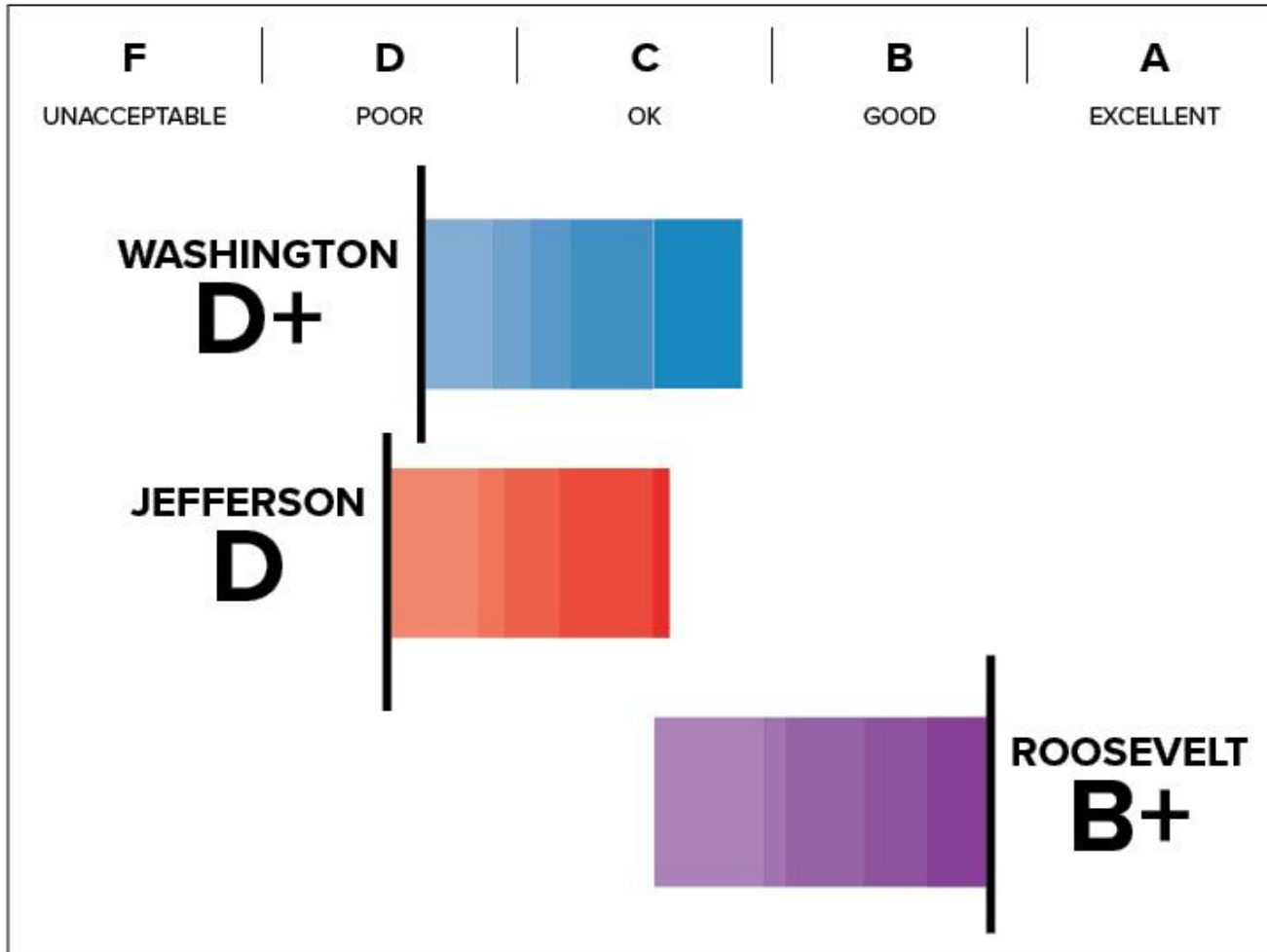
100% of Dubuque schools air conditioned after project completion.



CONSTRUCT A NEW MIDDLE SCHOOL on the Washington Middle School site to

- replace the more than 100-year-old Washington and Jefferson buildings
- ensure access to similar, high-quality facilities for ALL middle school students in the district
- create feeder system to allow students to attend middle and high school within the same cohort

CURRENT STATE



Existing Washington and Jefferson are **100 YEAR-OLD BUILDINGS** which have served the community well but have challenges supporting modern education.

INFLEXIBLE STRUCTURE

OLD INFRASTRUCTURE AND SYSTEMS

SMALL SPACES FOR CURRENT POPULATION

NO SECURE ENTRANCE

NOT DESIGNED FOR SMALL LEARNING COMMUNITIES

WHY DOES IT MATTER?

JEFFERSON AND WASHINGTON OPENED

ROOSEVELT OPENED

1900

READING
WRITING
MATH
CIVICS

1910

READING
WRITING
MATH
CIVICS
**HEALTH
NUTRITION**

1930

READING
WRITING
MATH
CIVICS
HEALTH
NUTRITION
**PHYSICAL ED
HOME EC
AGRICULTURE
BUSINESS**

1940

READING
WRITING
MATH
CIVICS
HEALTH
NUTRITION
PHYSICAL ED
HOME EC
AGRICULTURE
BUSINESS
**BUSINESS
ART
MUSIC
SPEECH & DRAMA
1/2 DAY KINDERGARTEN
SCHOOL LUNCH**

1950

READING
WRITING
MATH
CIVICS
HEALTH
NUTRITION
PHYSICAL ED
HOME EC
AGRICULTURE
BUSINESS
BUSINESS
ART
MUSIC
SPEECH & DRAMA
1/2 DAY KINDERGARTEN
SCHOOL LUNCH
**EXPANDED SCIENCE
EXPANDED MATH
FOREIGN LANGUAGE**

1960

READING
WRITING
MATH
CIVICS
HEALTH
NUTRITION
PHYSICAL ED
HOME EC
AGRICULTURE
BUSINESS
BUSINESS
ART
MUSIC
SPEECH & DRAMA
1/2 DAY KINDERGARTEN
SCHOOL LUNCH
EXPANDED SCIENCE
EXPANDED MATH
FOREIGN LANGUAGE
**ADVANCED PLACEMENT
HEAD START
TITLE 1 (READING)
CAREER EDUCATION**

1970

READING
WRITING
MATH
CIVICS
HEALTH
NUTRITION
PHYSICAL ED
HOME EC
AGRICULTURE
BUSINESS
BUSINESS
ART
MUSIC
SPEECH & DRAMA
1/2 DAY KINDERGARTEN
SCHOOL LUNCH
EXPANDED SCIENCE
EXPANDED MATH
FOREIGN LANGUAGE
ADVANCED PLACEMENT
HEAD START
TITLE 1 (READING)
CAREER EDUCATION
**SPECIAL EDUCATION
TITLE IX (GIRLS SPORTS)
BEHAVIORAL DISORDER
GUIDANCE
BREAKFAST
ENVIRONMENTAL
DRUG ABUSE
PARENTING / CHILD DEV**

1980

READING
WRITING
MATH
CIVICS
HEALTH
NUTRITION
PHYSICAL ED
HOME EC
AGRICULTURE
BUSINESS
BUSINESS
ART
MUSIC
SPEECH & DRAMA
1/2 DAY KINDERGARTEN
SCHOOL LUNCH
EXPANDED SCIENCE
EXPANDED MATH
FOREIGN LANGUAGE
ADVANCED PLACEMENT
HEAD START
TITLE 1 (READING)
CAREER EDUCATION
SPECIAL EDUCATION
TITLE IX (GIRLS SPORTS)
BEHAVIORAL DISORDER
GUIDANCE
BREAKFAST
ENVIRONMENTAL
DRUG ABUSE
PARENTING / CHILD DEV
**COMPUTER EDUCATION
ESL
PRE-K
AT-RISK**

1990

READING
WRITING
MATH
CIVICS
HEALTH
NUTRITION
PHYSICAL ED
HOME EC
AGRICULTURE
BUSINESS
BUSINESS
ART
MUSIC
SPEECH & DRAMA
1/2 DAY KINDERGARTEN
SCHOOL LUNCH
EXPANDED SCIENCE
EXPANDED MATH
FOREIGN LANGUAGE
ADVANCED PLACEMENT
HEAD START
TITLE 1 (READING)
CAREER EDUCATION
SPECIAL EDUCATION
TITLE IX (GIRLS SPORTS)
BEHAVIORAL DISORDER
GUIDANCE
BREAKFAST
ENVIRONMENTAL
DRUG ABUSE
PARENTING / CHILD DEV
COMPUTER EDUCATION
ESL
PRE-K
AT-RISK
**TECHNOLOGY
PREGNANCY AWARENESS
FULL-DAY KINDERGARTEN
STRANGER DANGER
ANTI-SMOKING
PSYCHOLOGICAL SERVICES**

2000

READING
WRITING
MATH
CIVICS
HEALTH
NUTRITION
PHYSICAL ED
HOME EC
AGRICULTURE
BUSINESS
BUSINESS
ART
MUSIC
SPEECH & DRAMA
1/2 DAY KINDERGARTEN
SCHOOL LUNCH
EXPANDED SCIENCE
EXPANDED MATH
FOREIGN LANGUAGE
ADVANCED PLACEMENT
HEAD START
TITLE 1 (READING)
CAREER EDUCATION
SPECIAL EDUCATION
TITLE IX (GIRLS SPORTS)
BEHAVIORAL DISORDER
GUIDANCE
BREAKFAST
ENVIRONMENTAL
DRUG ABUSE
PARENTING / CHILD DEV
COMPUTER EDUCATION
ESL
PRE-K
AT-RISK
TECHNOLOGY
PREGNANCY AWARENESS
FULL-DAY KINDERGARTEN
STRANGER DANGER
ANTI-SMOKING
PSYCHOLOGICAL SERVICES
**CONFLICT RESOLUTION
CPR TRAINING
INCLUSION
SCHOOL TO WORK
COLLEGE COUNSELING
TALENTED AND GIFTED
SAFETY**

2010

READING
WRITING
MATH
CIVICS
HEALTH
NUTRITION
PHYSICAL ED
HOME EC
AGRICULTURE
BUSINESS
BUSINESS
ART
MUSIC
SPEECH & DRAMA
1/2 DAY KINDERGARTEN
SCHOOL LUNCH
EXPANDED SCIENCE
EXPANDED MATH
FOREIGN LANGUAGE
ADVANCED PLACEMENT
HEAD START
TITLE 1 (READING)
CAREER EDUCATION
SPECIAL EDUCATION
TITLE IX (GIRLS SPORTS)
BEHAVIORAL DISORDER
GUIDANCE
BREAKFAST
ENVIRONMENTAL
DRUG ABUSE
PARENTING / CHILD DEV
COMPUTER EDUCATION
ESL
PRE-K
AT-RISK
TECHNOLOGY
PREGNANCY AWARENESS
FULL-DAY KINDERGARTEN
STRANGER DANGER
ANTI-SMOKING
PSYCHOLOGICAL SERVICES
CONFLICT RESOLUTION
CPR TRAINING
INCLUSION
SCHOOL TO WORK
COLLEGE COUNSELING
TALENTED AND GIFTED
SAFETY
**FINANCIAL LITERACY
BULLYING PREVENTION
NO CHILD LEFT BEHIND
MEDIA LITERACY
ENGINEERING / PLTW
INNOVATION SKILLS**

2020

READING
WRITING
MATH
CIVICS
HEALTH
NUTRITION
PHYSICAL ED
HOME EC
AGRICULTURE
BUSINESS
BUSINESS
ART
MUSIC
SPEECH & DRAMA
1/2 DAY KINDERGARTEN
SCHOOL LUNCH
EXPANDED SCIENCE
EXPANDED MATH
FOREIGN LANGUAGE
ADVANCED PLACEMENT
HEAD START
TITLE 1 (READING)
CAREER EDUCATION
SPECIAL EDUCATION
TITLE IX (GIRLS SPORTS)
BEHAVIORAL DISORDER
GUIDANCE
BREAKFAST
ENVIRONMENTAL
DRUG ABUSE
PARENTING / CHILD DEV
COMPUTER EDUCATION
ESL
PRE-K
AT-RISK
TECHNOLOGY
PREGNANCY AWARENESS
FULL-DAY KINDERGARTEN
STRANGER DANGER
ANTI-SMOKING
PSYCHOLOGICAL SERVICES
CONFLICT RESOLUTION
CPR TRAINING
INCLUSION
SCHOOL TO WORK
COLLEGE COUNSELING
TALENTED AND GIFTED
SAFETY
FINANCIAL LITERACY
BULLYING PREVENTION
NO CHILD LEFT BEHIND
MEDIA LITERACY
ENGINEERING / PLTW
INNOVATION SKILLS
**EXPANDED CAREER PREP
HYBRID LEARNING
CODING SKILLS
SOCIAL EMOTIONAL**

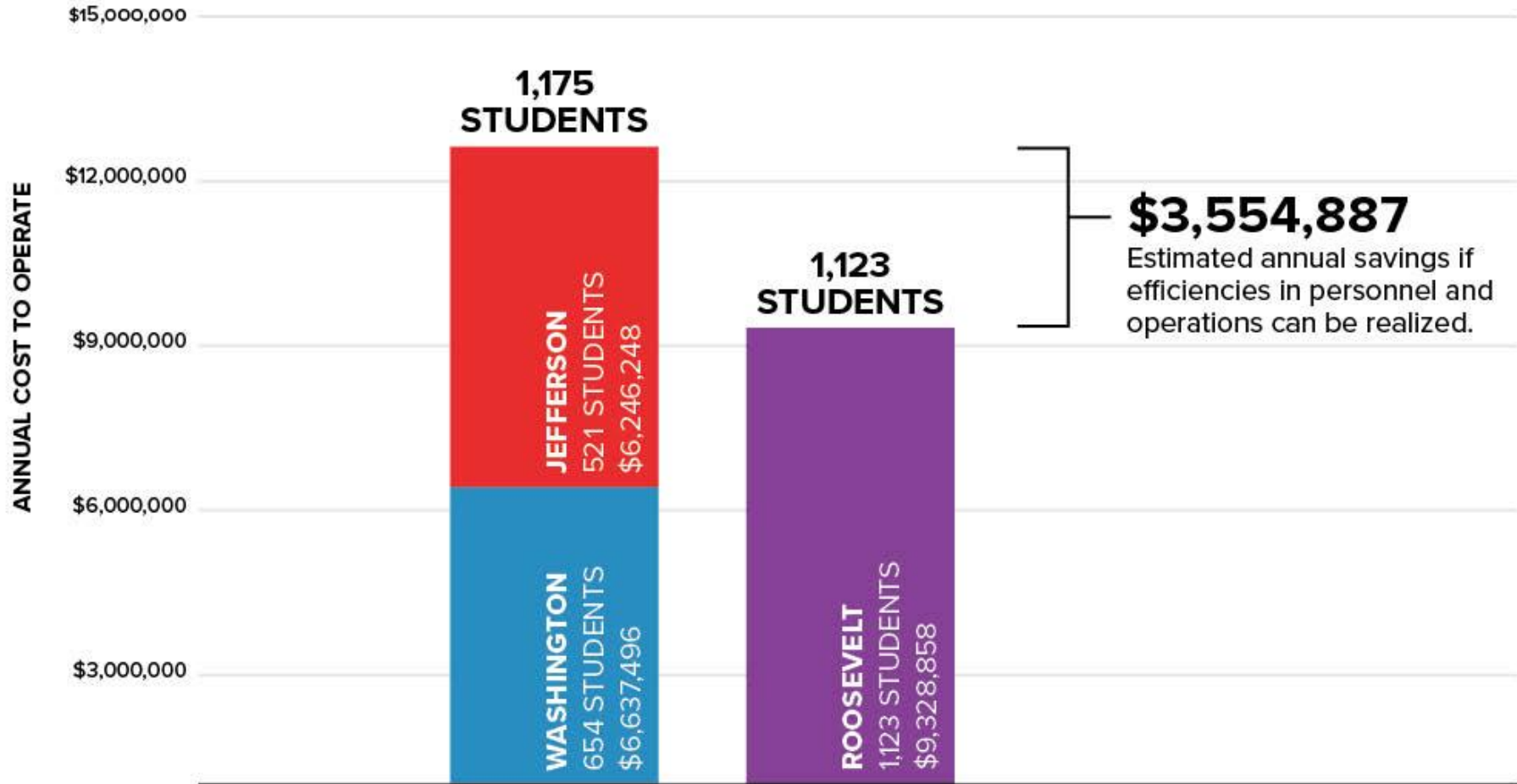


WHAT WE HAVE ASKED OUR PUBLIC SCHOOLS TO TEACH BY DECADE



120 YEARS OF EDUCATION

IMPACT



EXISTING SITES

	JEFFERSON	ROOSEVELT	WASHINGTON
# OF STUDENTS	535	1,118	648
YEAR CONSTRUCTED	1922	2005	1922
SQUARE FOOT PER STUDENT	168	185	152
PERCENT AIR CONDITIONED	11%	100%	18%
SECURE ENTRY	<input type="checkbox"/>	<input checked="" type="checkbox"/>	<input type="checkbox"/>
SITE SIZE	5 ACRES	31 ACRES	8.75 ACRES
PERCENT OF WALKERS AND CAR RIDERS	85%	30%	75%
CONFIGURED FOR SMALL LEARNING COMMUNITIES	<input type="checkbox"/>	<input checked="" type="checkbox"/>	<input type="checkbox"/>

NEW SITE OPTIONS

MIDDLE SCHOOLS



JEFFERSON

535 students
5 acres



ROOSEVELT

1,118 students
31 acres



WASHINGTON

648 students
8.75 acres

HIGH SCHOOLS



HEMPSTEAD

34.75 acres

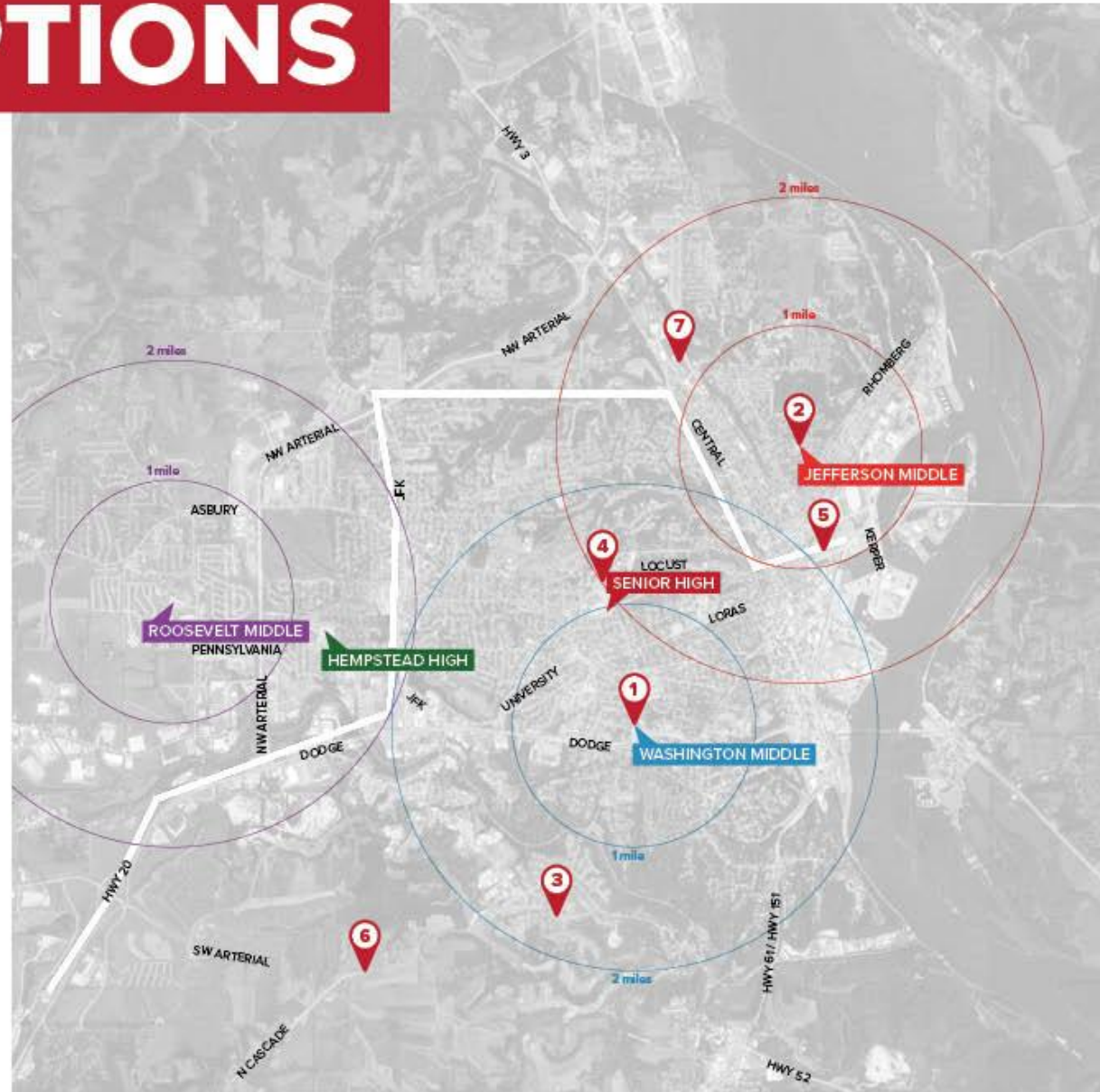


SENIOR

43.5 acres
(SHARED WITH TRANSPORTATION)

SITES CONSIDERED FOR NEW MIDDLE SCHOOL

- 1 ADDITION AT WASHINGTON**
District owned
- 2 ADDITION AT JEFFERSON**
District owned
- 3 VALENTINE PARK**
District owned / City owned
- 4 SENIOR SITE**
District owned
- 5 16TH STREET SITE**
Privately owned
- 6 SW ARTERIAL**
City owned
- 7 FLEXSTEEL SITE**
Privately owned



APPROACHES

A LINK

Addition to provide capacity at Washington

B REIMAGINED LINK

Addition to provide capacity and renovation to rethink Washington

C FRESH START

New build at Washington

D DO NOTHING

Fix Jefferson and Washington

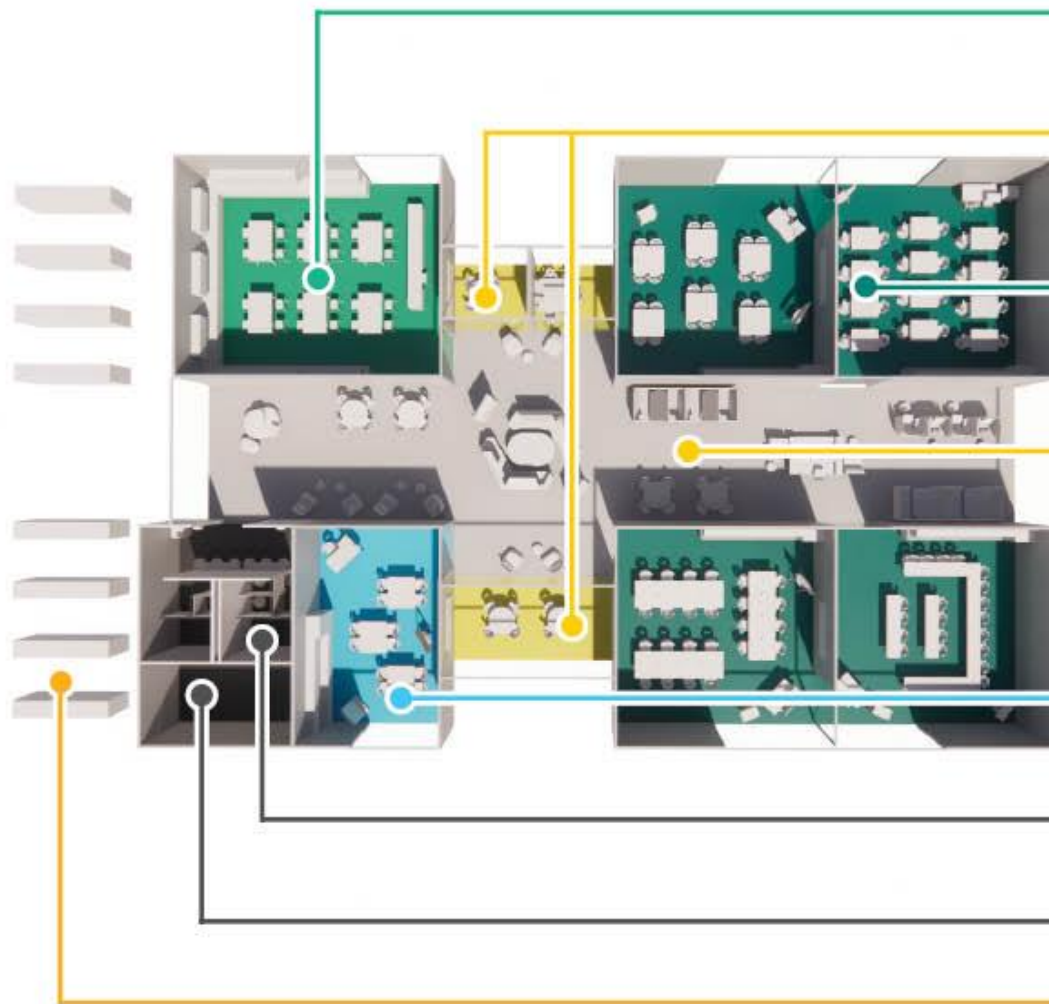
RECOMMENDATION



THE MIDDLE SCHOOL FACILITIES TASK FORCE RECOMMENDATION

- Consolidation from three to two middle school facilities
- Retention of Roosevelt Middle School
- Construction of a new middle school to serve 1,200-1,250 students at the Washington site
- Expansion of the Washington site to provide adequate site amenities (parking, drop-off, fields) for the new student population
- Development of a design that either retains portions of, reuses pieces of, or makes nod to the history of Washington and Jefferson Middle Schools
- Adjusting middle school boundaries to create a feeder system which aligns to the existing high schools

HOUSE STRUCTURE



SCIENCE CLASSROOM

- 1 SCIENCE CLASSROOM PER LEARNING COMMUNITY
- INTERIOR VISUAL CONNECTIONS AND ACCESS TO DAYLIGHT AND VIEWS
- DEDICATED STORAGE

RESOURCE AREAS

- SMALL AND MEDIUM MEETING AND BREAKOUT ROOMS FOR ONE-ON-ONE WORK, SMALL GROUP SESSIONS, READING AND MATH SUPPORT, TITLE 1 PROGRAMS, ETC.

LEARNING STUDIOS

- 4 CLASSROOMS PER LEARNING COMMUNITY
- SPACE TO ALLOW FOR MULTIPLE CLASSROOM ARRANGEMENTS AND ZONING
- INTERIOR VISUAL CONNECTIONS AND ACCESS TO DAYLIGHT AND VIEWS
- DEDICATED STORAGE
- PHYSICAL AND VISUAL CONNECTIONS BETWEEN CLASSROOMS

COLLABORATION ZONE

- SHARED SPACE BETWEEN CLASSROOMS TO ALLOW FOR SMALL GROUP BREAK-OUT, ONE-ON-ONE WORK, AND DIFFERENT LEARNING ENVIRONMENT
- VISUAL CONNECTIONS TO CLASSROOMS TO ALLOW FOR SUPERVISION
- ACCESS TO OUTDOOR LEARNING SPACE
- LARGE GROUP GATHERING SPACE

INTERVENTION CLASSROOM

- SPECIAL NEEDS CLASSROOMS INTEGRATED INTO LEARNING COMMUNITY TO ALLOW FOR CONNECTIONS TO CORE CLASSROOMS AND EASY STUDENT TRANSITIONS

BATHROOMS

- BATHROOMS WITHIN EACH LEARNING COMMUNITY FOR EASY ACCESS AND SUPERVISION

STORAGE

- GENERAL STORAGE FOR EACH LEARNING COMMUNITY

GRADE BASED RESOURCES

- 1 CENTRALLY LOCATED STAFF COLLABORATION ROOM PER GRADE
- 1 CENTRALLY LOCATED STAFF RESTROOM PER GRADE
- LOCKERS CO-LOCATED IN AN EFFICIENT, CENTRAL AREA

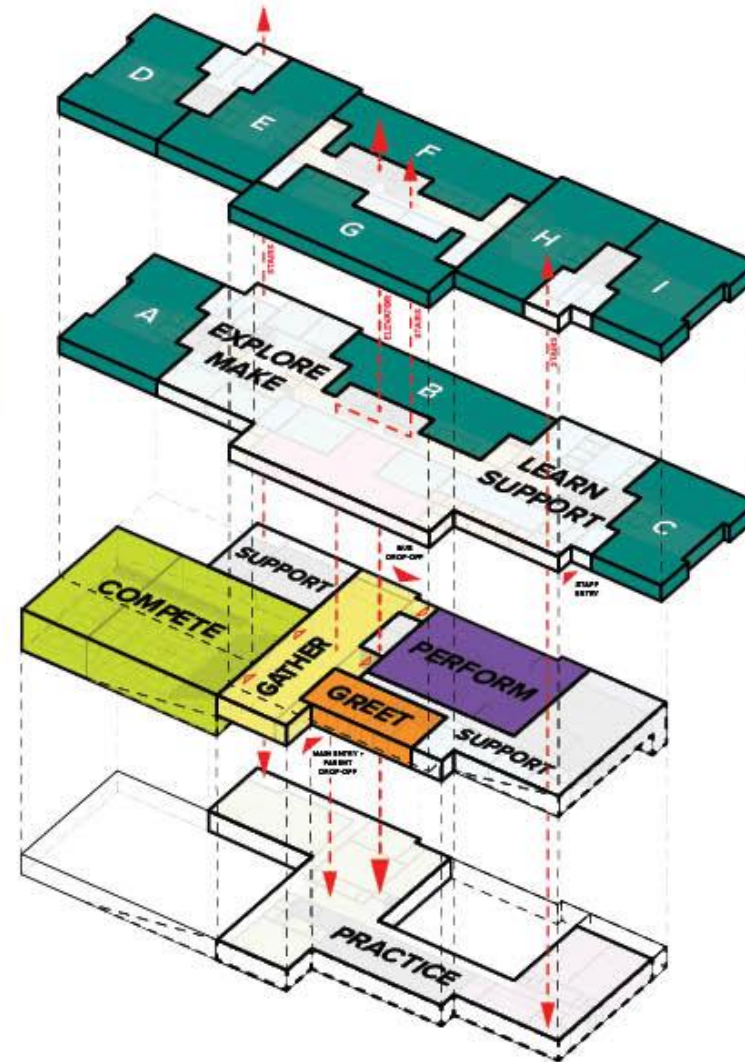
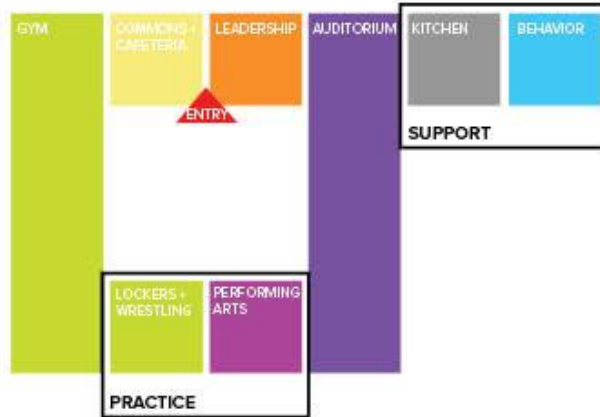
SPACE PLAN

3 LEARN

2 LEARN
EXPLORE
MAKE
SUPPORT

1 GREET
GATHER
SUPPORT

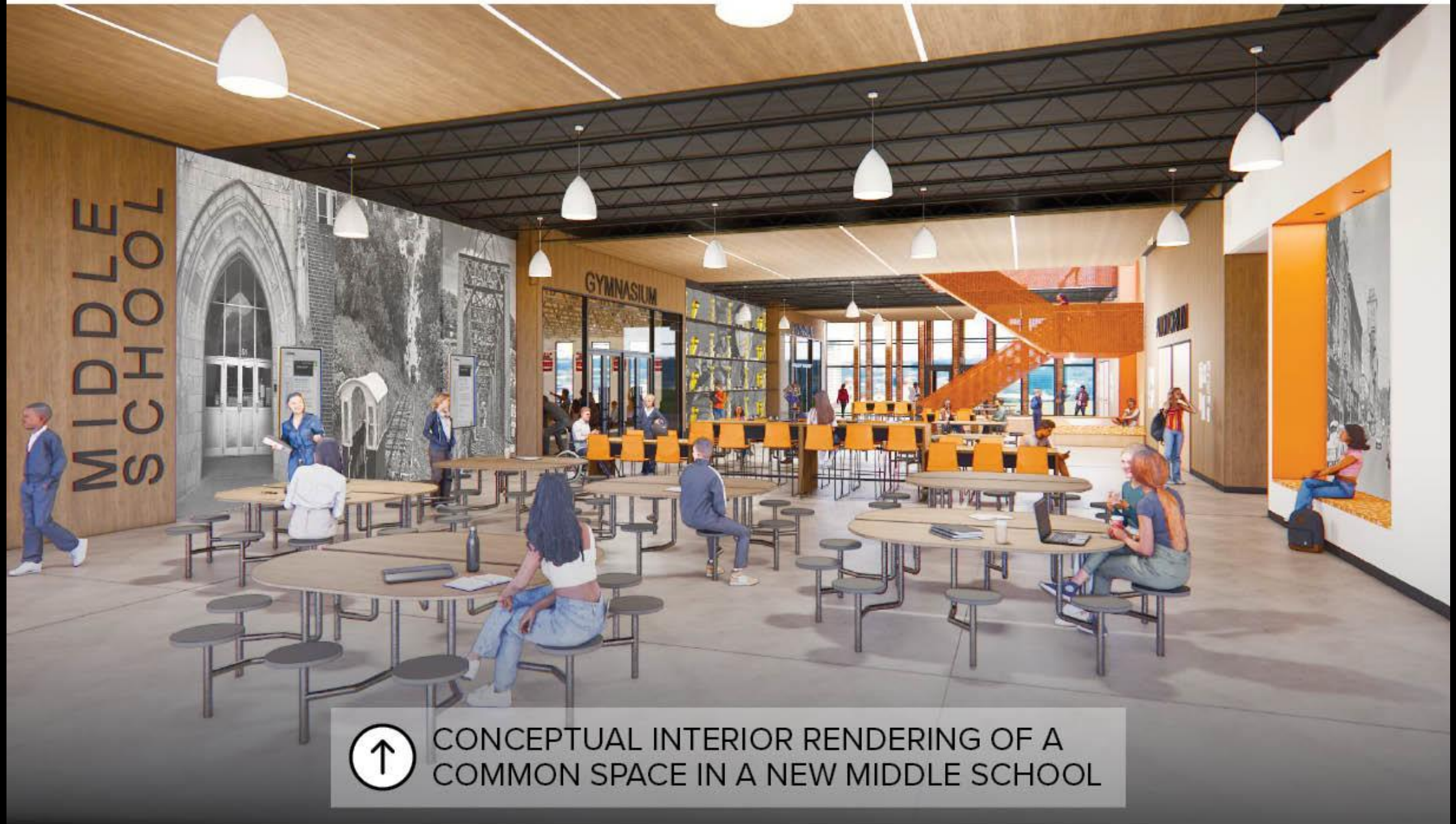
0 PRACTICE
COMPETE
PERFORM





CONCEPTUAL EXTERIOR RENDERING SHOWING
A POTENTIAL VISION FOR A NEW MIDDLE SCHOOL





CONCEPTUAL INTERIOR RENDERING OF A COMMON SPACE IN A NEW MIDDLE SCHOOL



CONCEPTUAL INTERIOR RENDERING OF A HOUSE
COLLABORATION SPACE IN A NEW MIDDLE SCHOOL



SITE PLAN





CONSTRUCT A GYM ADDITION at Eisenhower Elementary School

Space constraints from not having a separate gymnasium and lunch/multipurpose room create scheduling conflicts and limit the amount of time available in the school day to both serve meals and teach wellness. It also restricts the ability to hold special events during the day.

CURRENT STATE

HOW DOES EISENHOWER COMPARE TO OTHER SCHOOLS?

	# OF STUDENTS	SEPARATE CAFETERIA / GYM
EISENHOWER	552	
KENNEDY	547	
CARVER	506	
IRVING	405	
TABLE MOUND	381	
PRESCOTT	315	
MARSHALL	298	
BRYANT	297	
HOOVER	291	
SAGEVILLE	285	
AUDUBON	261	
LINCOLN	245	

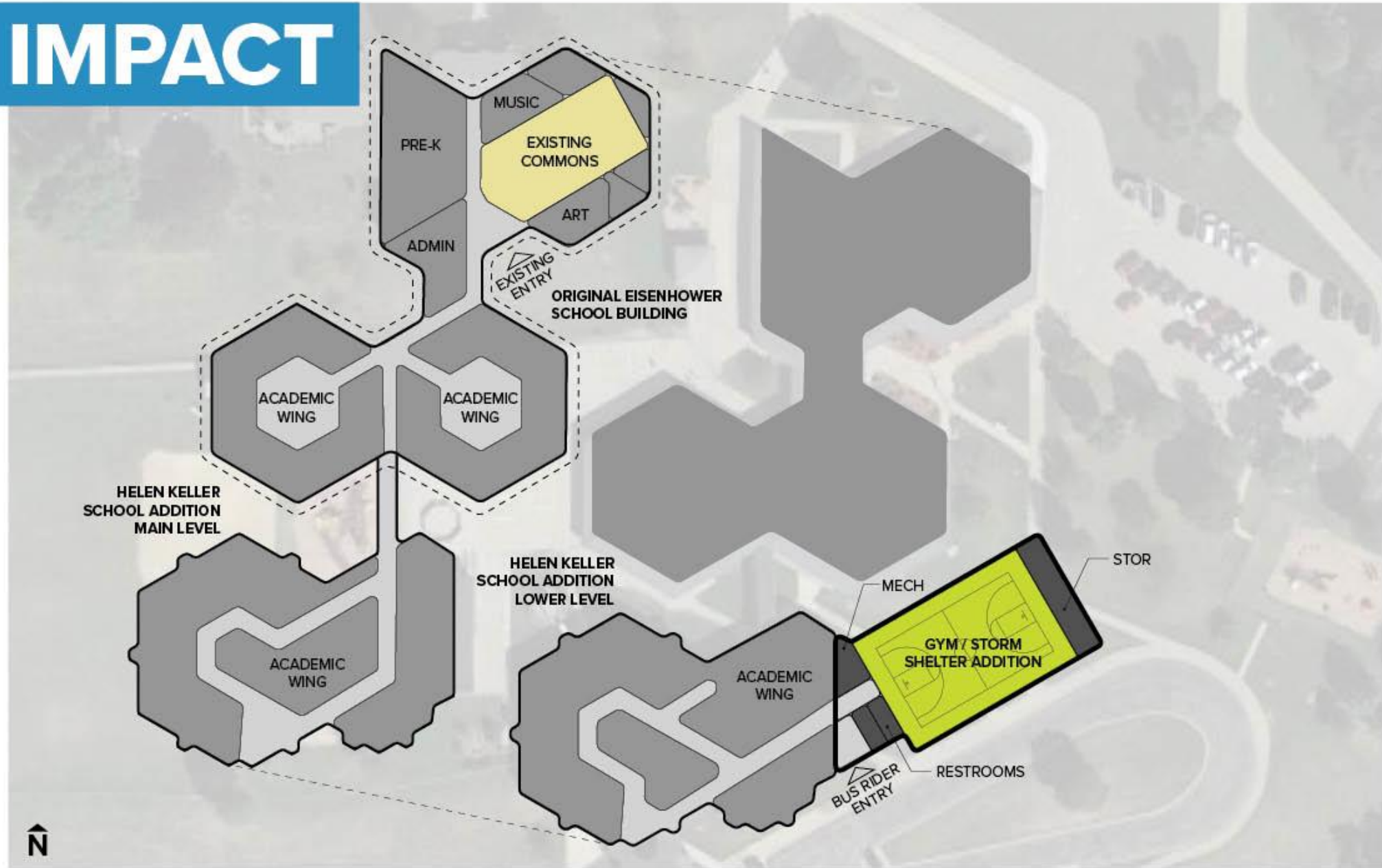


WHY DOES IT MATTER?



AFTER LUNCH CONCLUDES, THIS SPACE MUST REVERT BACK TO A GYM WITHIN 15 MINUTES

IMPACT





CONSTRUCT A BASEBALL AND SOFTBALL FACILITY with lights, restrooms and concessions

New fields would address increased player safety risks that exist on some current fields due to the orientation of the sun. Additionally, we are the only district in our conference without lighted facilities and current restroom facilities are not in close proximity to the fields.

CURRENT STATE

HOW DO WE COMPARE
TO OTHER SCHOOLS IN
OUR CONFERENCE?

	LIGHTED FIELDS
CEDAR FALLS	✓
CEDAR RAPIDS JEFFERSON	✓
CEDAR RAPIDS KENNEDY	✓
CEDAR RAPIDS PRAIRIE	✓
CEDAR RAPIDS WASHINGTON	✓
CEDAR RAPIDS XAVIER	✓
DUBUQUE HEMPSTEAD	✗
DUBUQUE SENIOR	✗
DUBUQUE WAHLERT	✓ NO FOR SOFTBALL
IOWA CITY HIGH	✓
IOWA CITY LIBERTY	✓
IOWA CITY WEST	✓
LINN-MAR	✓
WATERLOO WEST	✓
WESTERN DUBUQUE	✓

IMPACT



**SAFE PLAYING
CONDITIONS**

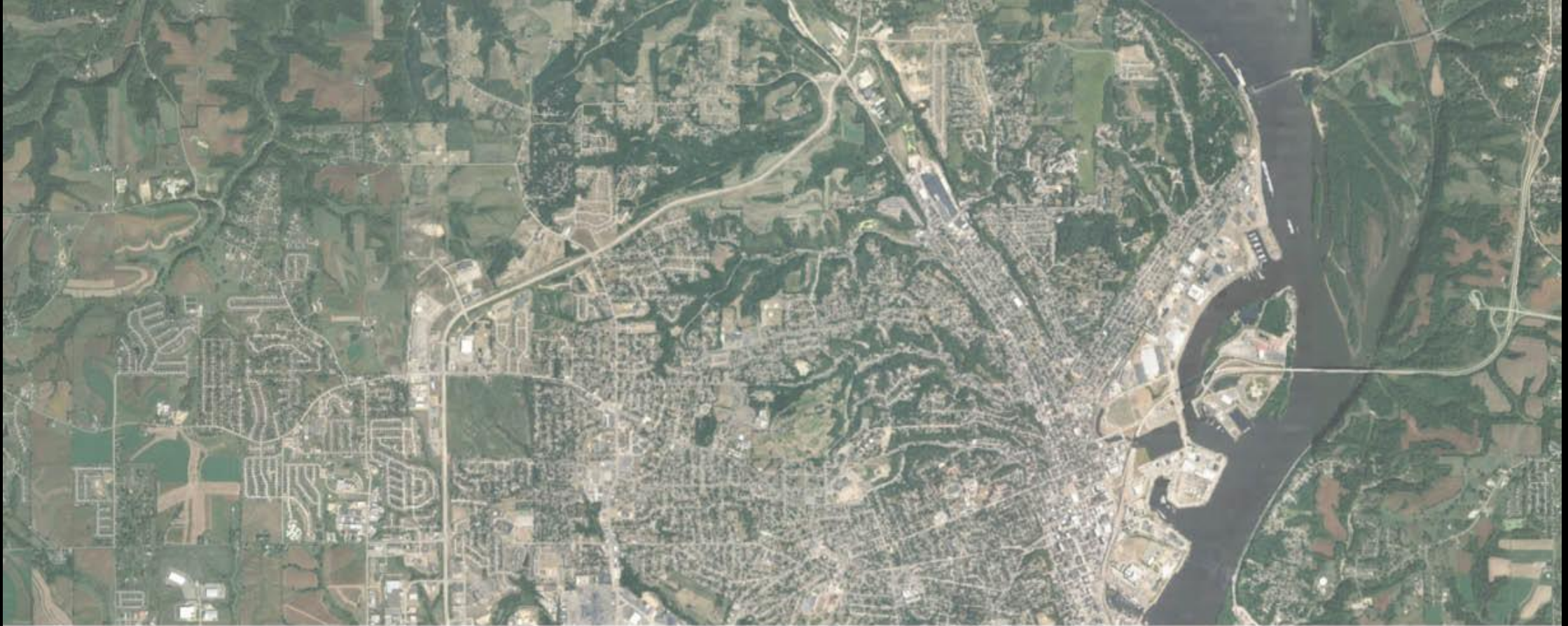


**LIGHTED
FIELDS**



**ADJACENT, MODERN RESTROOM
AND CONCESSION FACILITIES**





LAND ACQUISITION

for a potential future elementary school

This will allow the district to prepare to address the long-term needs of families, aligned with movement in the community's housing population.

1930

27

WASHINGTON MIDDLE

WHY DOES IT MATTER?



THE DISTRICT ANTICIPATED POPULATION GROWTH WHEN WASHINGTON WAS CONSTRUCTED ON THE EDGE OF TOWN

1950

WASHINGTON MIDDLE



TWENTY YEARS LATER, POPULATION DID IN FACT GROW AROUND WASHINGTON MIDDLE SCHOOL

TODAY

WASHINGTON MIDDLE



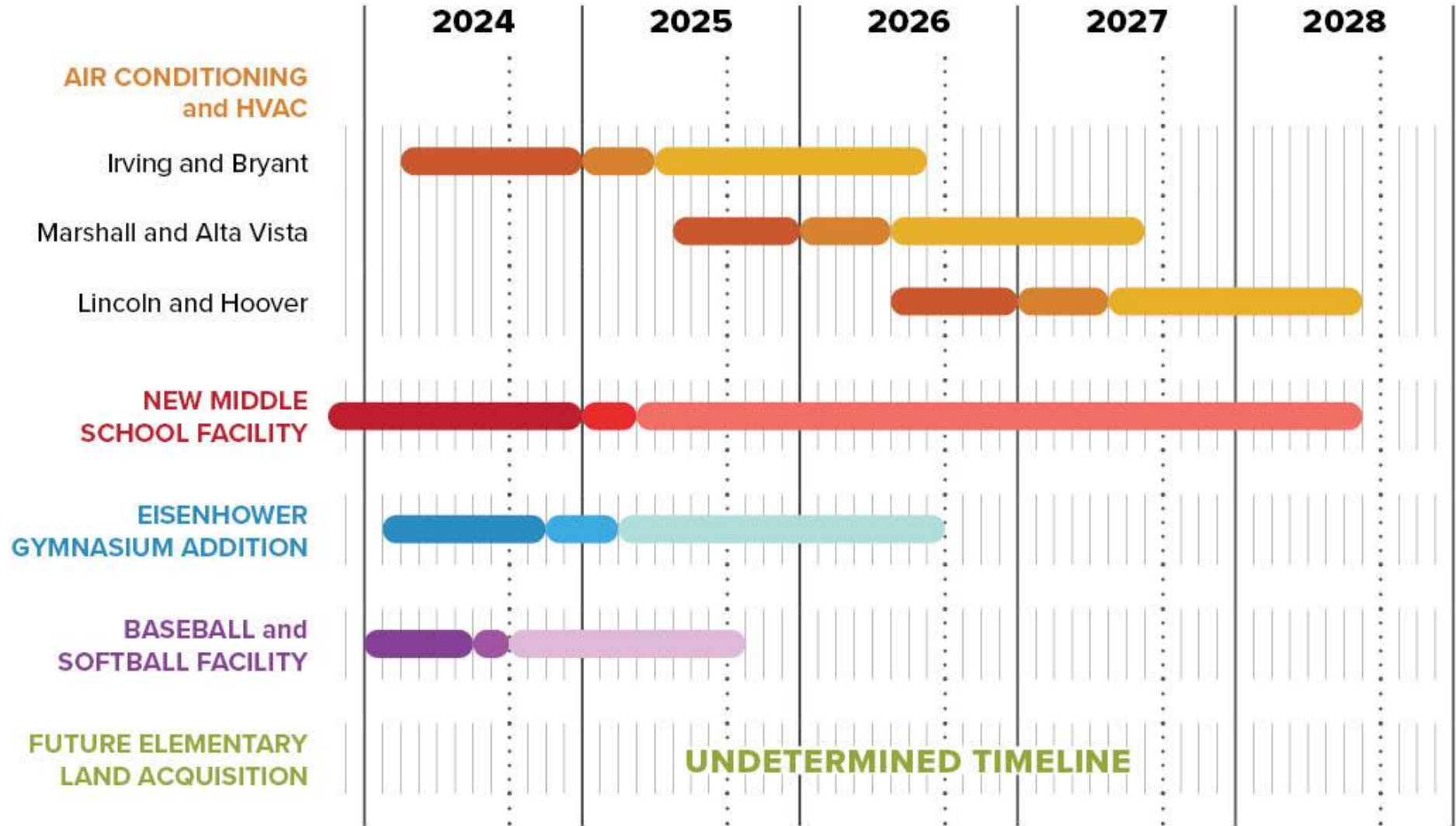
WASHINGTON MIDDLE SCHOOL IS LOCATED
IN THE HEART OF THE DUBUQUE COMMUNITY

WHAT'S THE OVERALL IMPACT?

THE PROPOSED SOLUTION IS
TAX-RATE NEUTRAL

TENTATIVE TIMELINE

- DESIGN
- BIDDING AND PROCUREMENT
- CONSTRUCTION



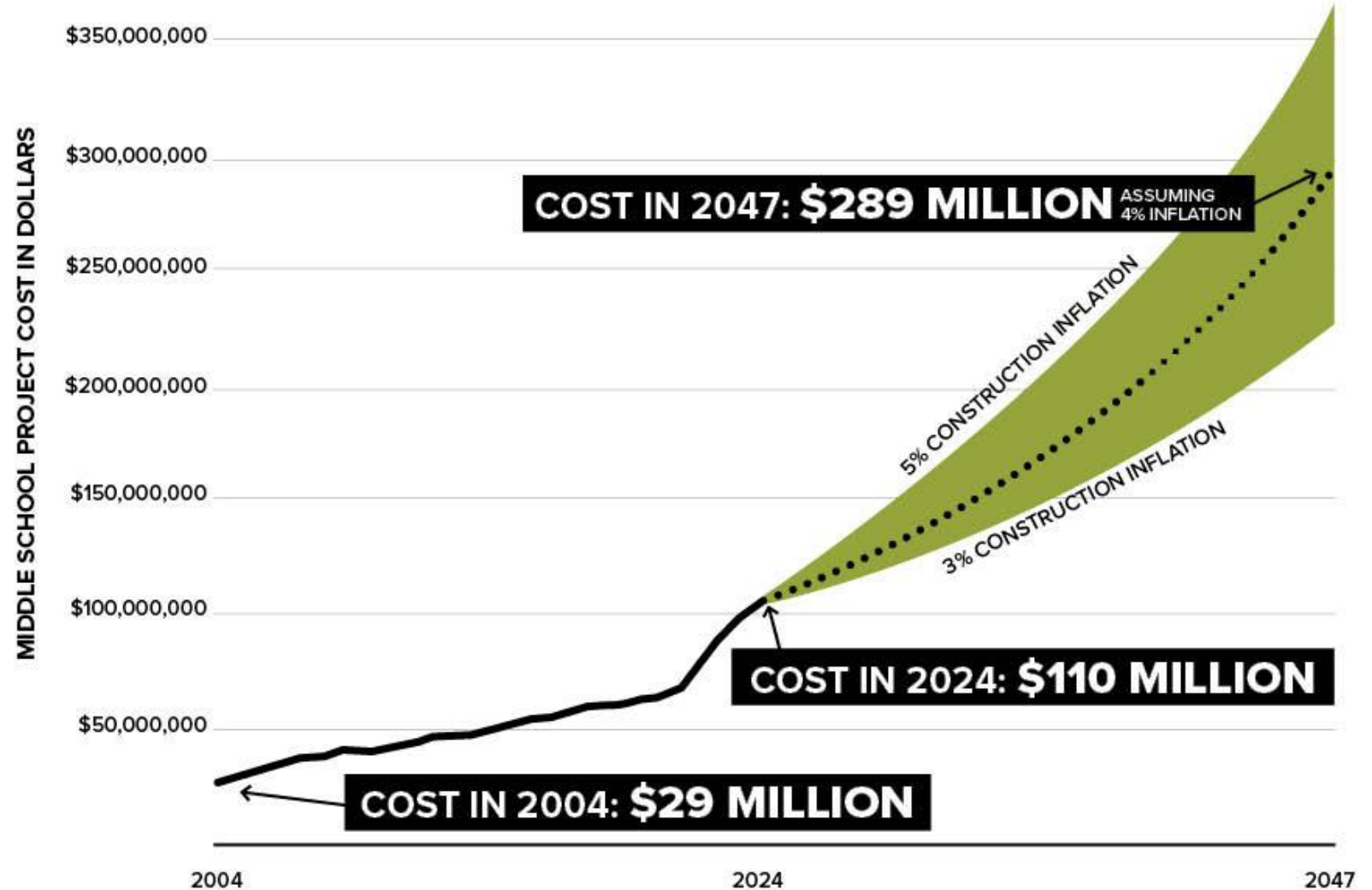
ESTIMATED COST

AIR CONDITIONING and HVAC	\$19.6M-\$21.6M
NEW MIDDLE SCHOOL FACILITY	\$105.8-\$117.5M
EISENHOWER GYMNASIUM ADDITION	\$4.8-\$5.3M
BASEBALL and SOFTBALL FACILITY	\$5.2M-\$5.8M
FUTURE ELEMENTARY LAND ACQUISITION	\$500K-\$600K
TOTAL	\$135.9M-\$150.8M

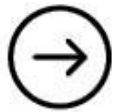
WHY NOW?



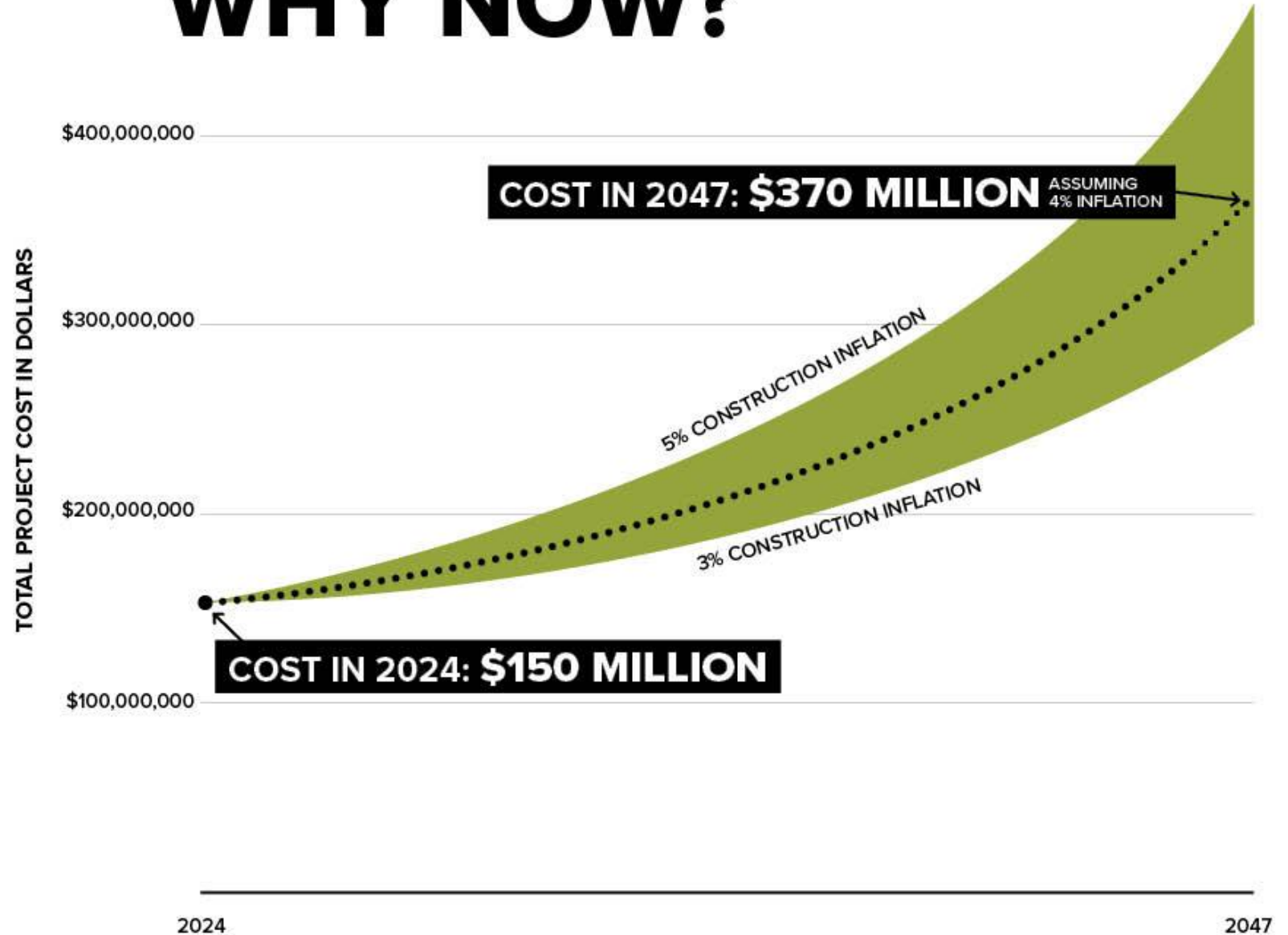
THE COST TO BUILD ROOSEVELT THEN, NOW AND IN THE FUTURE



WHY NOW?



THE COST OF ALL BOND PROJECTS TODAY AND IN THE FUTURE



WHY NOT USE A SAVE BOND (ONE-CENT SALES TAX) FUNDS?

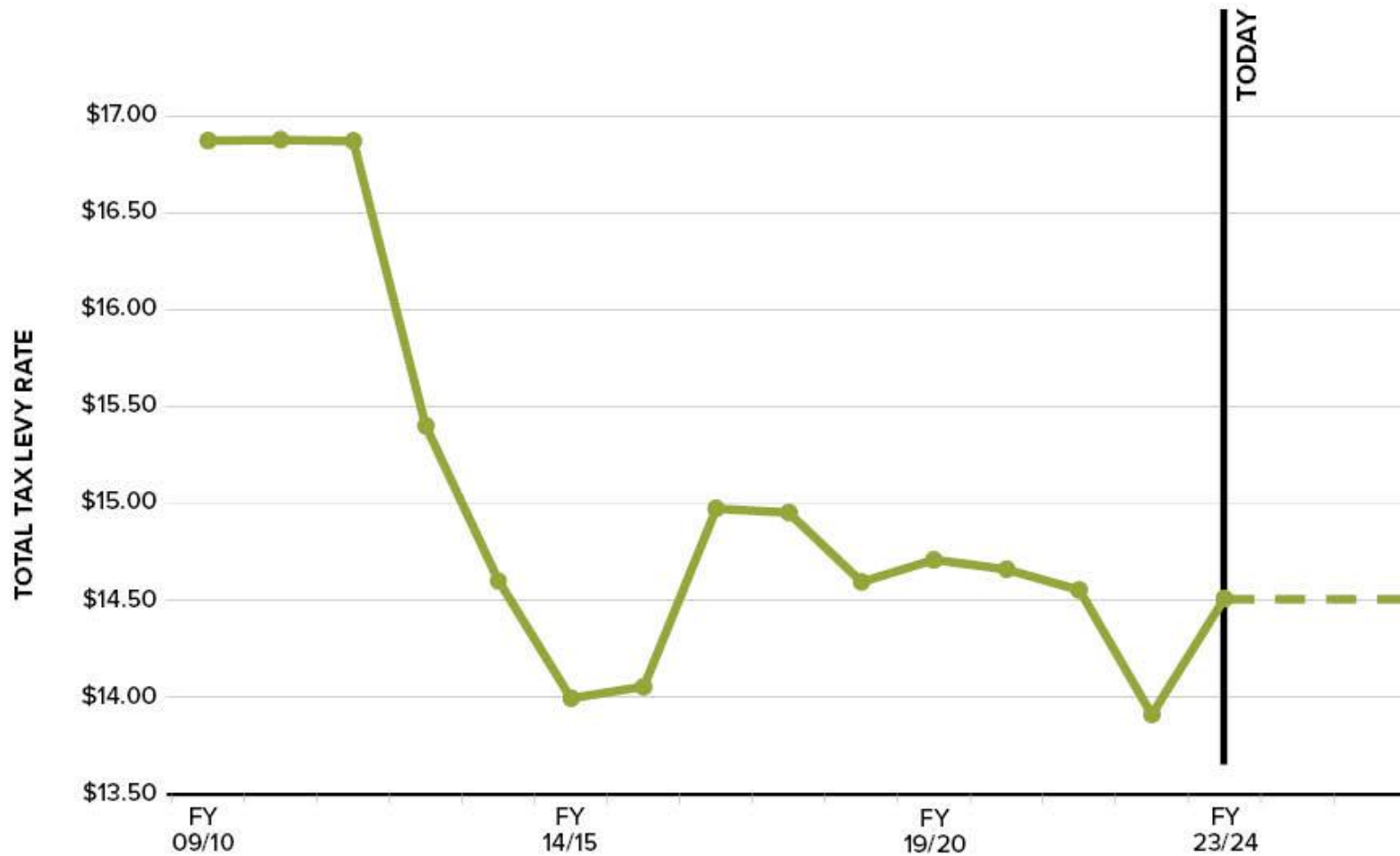
→ **SAVE CAPACITY DOESN'T EXIST** TO FUND ALL PROJECTS

→ FUNDING THESE PROJECTS WITH A **SAVE BOND** WOULD:

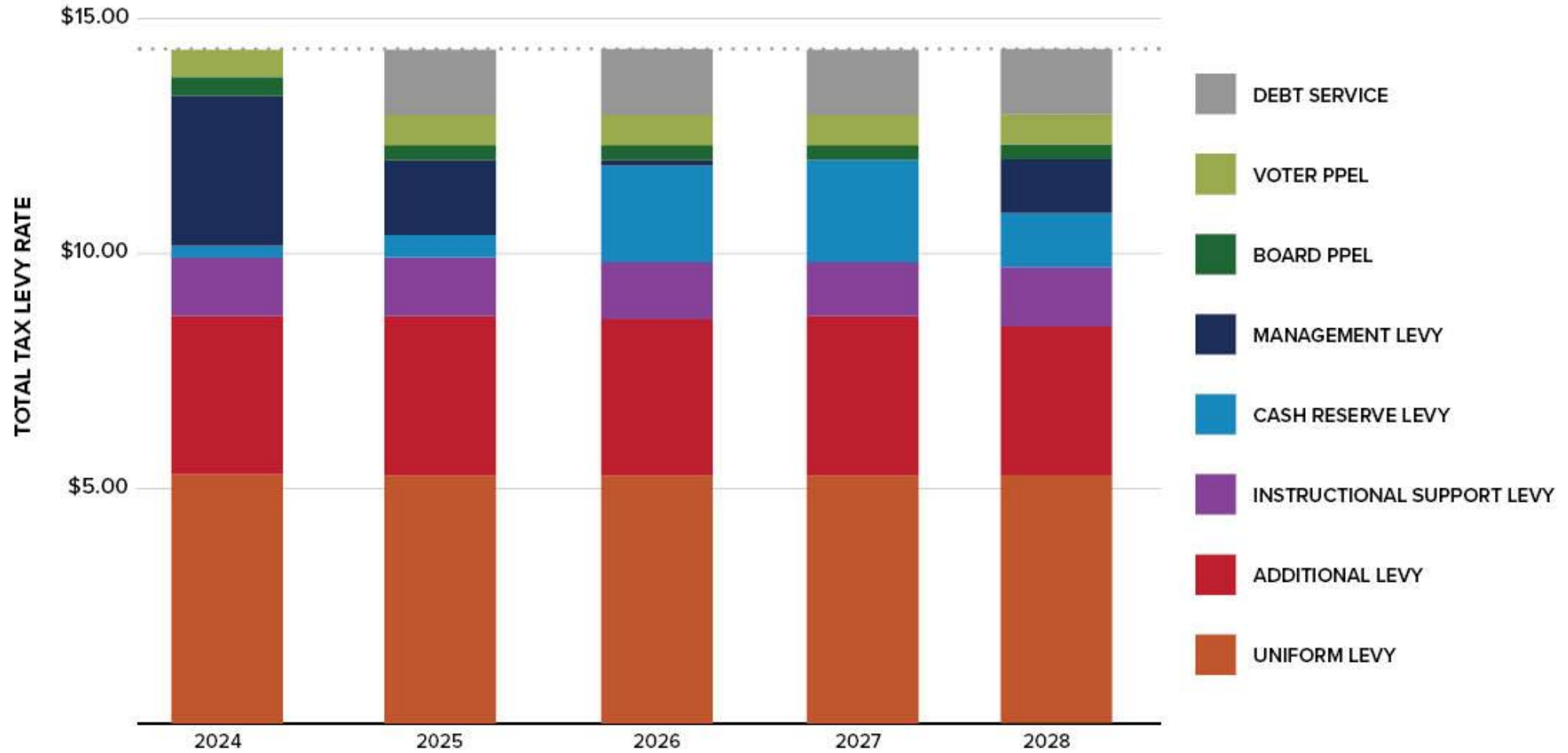
- Reduce the district's ability to complete any future projects without a bond at that time
- Reduce the district's ability to ensure stability in the tax levy rate*
- Cost an additional \$8.5 million over time in interest and other bonding costs

* Some available SAVE funds will be used over time to fund general obligation bond principal and interest payments to offset changes in the district's overall levy rate and ensure it remains at \$14.51 per \$1,000 of assessed value.

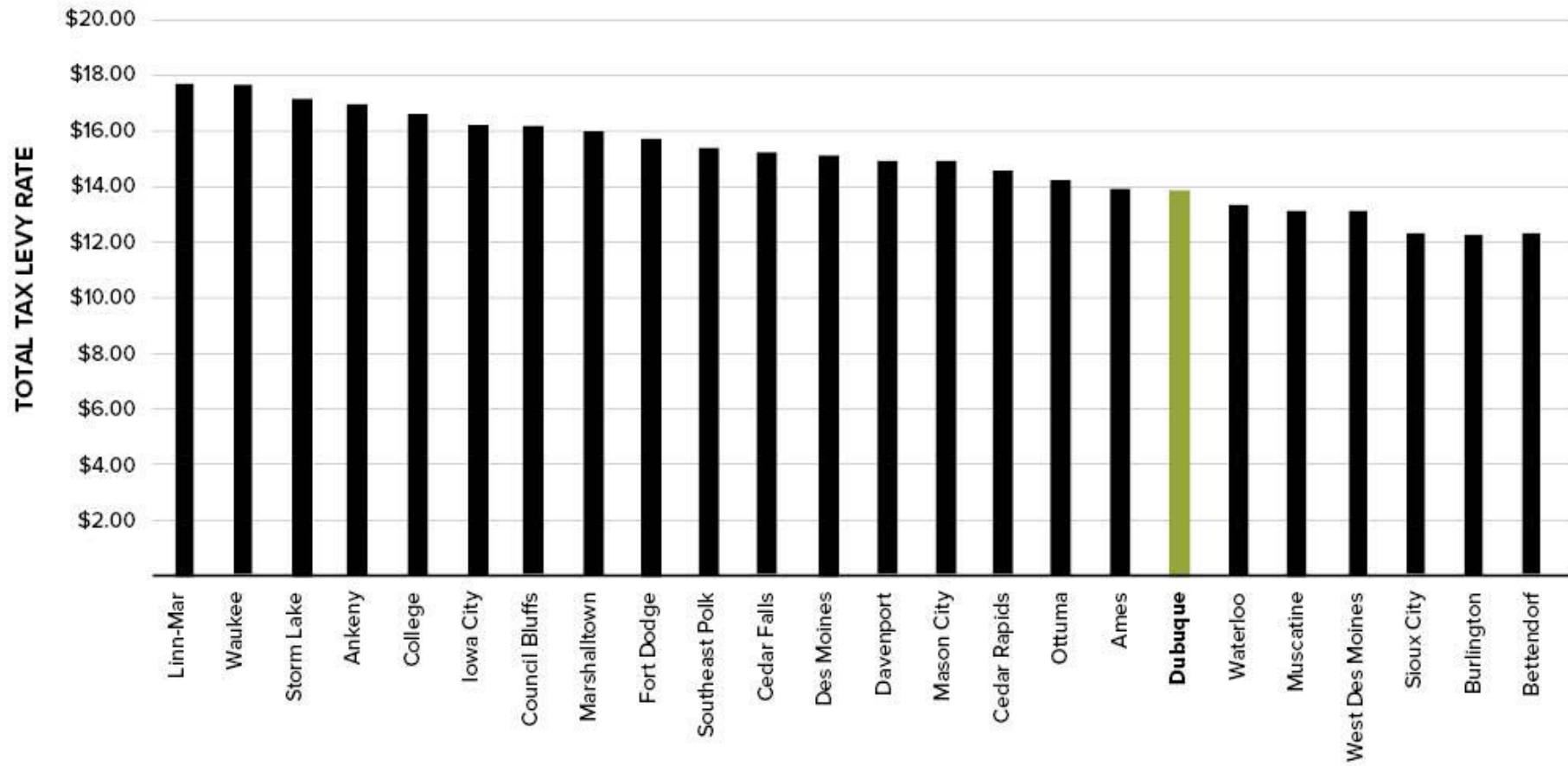
FUTURE TAX IMPACT



FUTURE TAX IMPACT



TAX LEVY COMPARISON



NEXT STEPS



SPREAD THE WORD



**VISIT DISTRICT WEBSITE FOR MORE INFO,
INCLUDING WAYS TO VOTE:**

www.dbqschools.org/bond